



# GAT MONTHLY MEMBERSHIP PROGRESS REPORT

Results as of: 7/31/2023

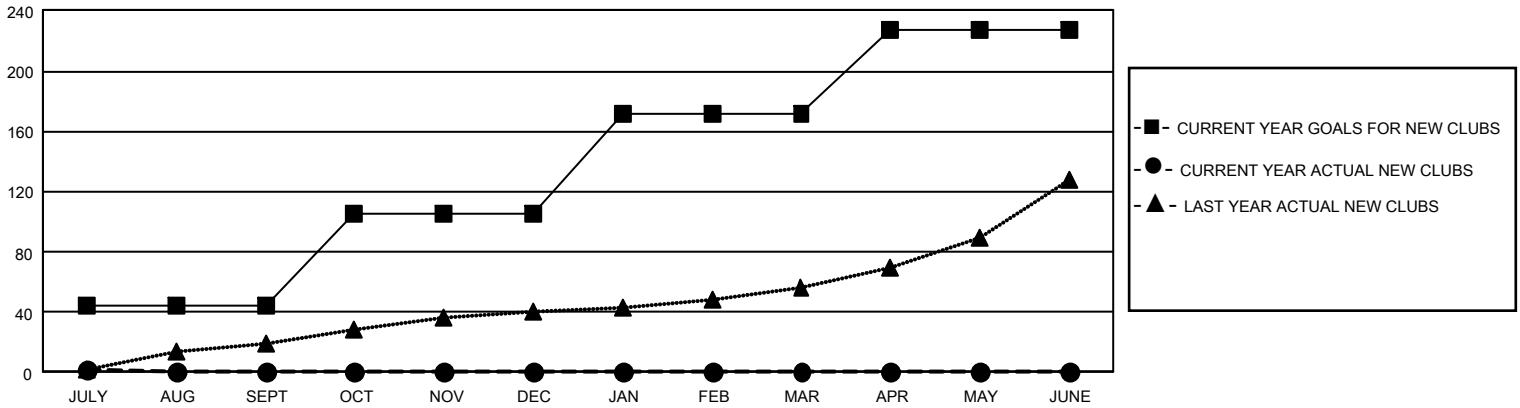
## GAT Constitutional Area 3

REPORT DOES NOT INCLUDE CLUBS IN UNDISTRICTED AREAS.

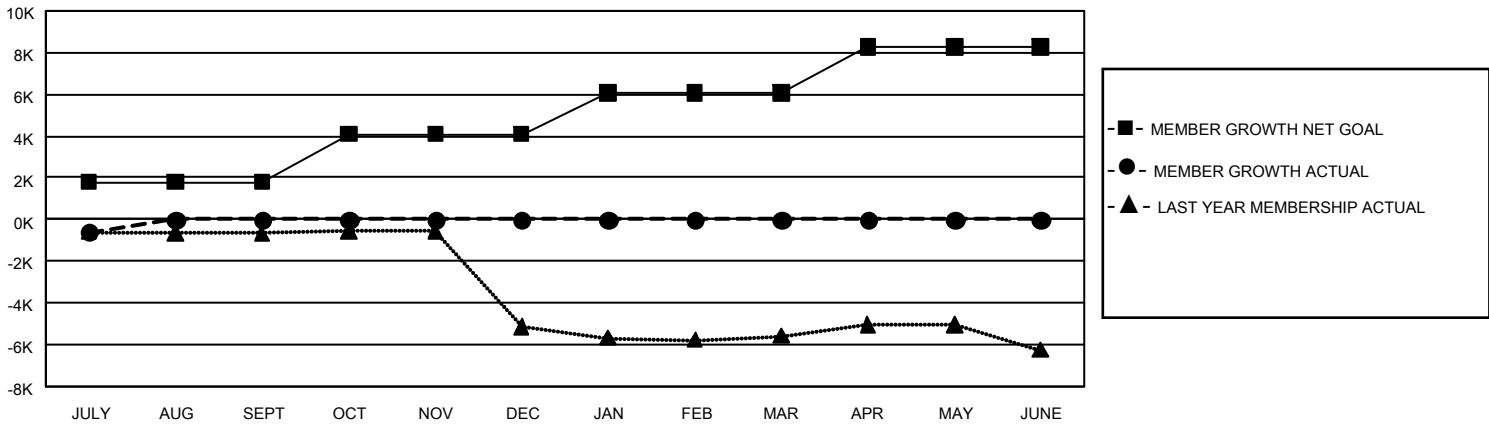
Clubs			
RESULTS FOR 2023-2024			
QUARTER	NEW CLUB GOAL	NEW CLUBS	DROPPED CLUBS
JULY/AUG/SEPT	132	2	24
OCT/NOV/DEC	183	0	0
JAN/FEB/MAR	198	0	0
APR/MAY/JUNE	168	0	0

Members			
RESULTS FOR 2023-2024			
QUARTER	MEMBER GROWTH NET GOAL	MEMBER GROWTH ACTUAL	DROPPED MEMBERS ACTUAL (including transfers)
JULY/AUG/SEPT	1799	1,145	1,577
OCT/NOV/DEC	2298	0	0
JAN/FEB/MAR	1964	0	0
APR/MAY/JUNE	2200	0	0

GOALS AND ACTUAL NEW CLUBS CUMULATIVE



GOALS AND ACTUAL MEMBERS CUMULATIVE



DROPPED CLUBS: 24	
<b>DROPPED MEMBERS</b>	
DECEASED	85
CLUB CANCELLED	81
OTHER	1,412
<b>TOTAL</b>	<b>1,578</b>

412 CLUBS OF 4,230 ADDED 1 OR MORE NEW MEMBERS

[CLICK HERE FOR CUMULATIVE MEMBERSHIP DATA](#)

GENDER DISTRIBUTION	
MALE	47,799 (47.21%)
FEMALE	53,411 (52.75%)
NON BINARY	3 (0.00%)
PREFER NOT TO ANSWER	41 (0.04%)
TOTAL FAMILY UNIT MEMBERS	38,823
FAMILY MEMBERS PAYING HALF DUES	21,639